

Elastomeric fire resistant sealant



APPLICATIONS

- Curtain wall/slab edge - 8" (200mm)
- Head of wall - 4" (100mm)
- General construction joints - 8" (200mm)
- Service penetrations -
- Cable tray - 24" x 4" (600mm x 100mm)
- Steel pipes - 8" (200mm)

APPLICATIONS

Suitable for:

- Flexible wall construction
- Rigid Floor & Wall construction
- Flexible Wall
- Masonry
- Concrete

ADVANTAGES

- Water based
- Flexible set
- Contains mould growth inhibitor
- Freeze - thaw capabilities
- Paintable
- Accelerated age & humidity tested
- Low VOC
- Spray or brush applied
- Excellent smoke seal
- Water resistant

APPROVALS

American Standard

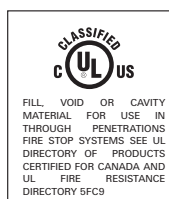
ASTM E 814
(UL 1479)

American Standard

ASTM E 84
(UL 723)

American Standard

ASTM E 1966
(UL 2079)



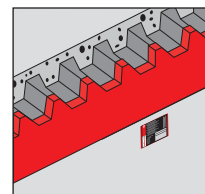
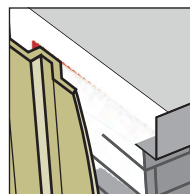
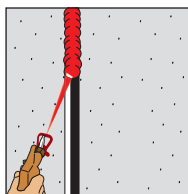
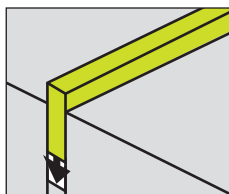
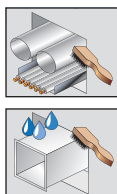
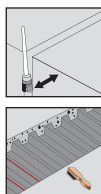
DESCRIPTION

- fischer fire rated construction joint sealant RFS 640 is a spray grade one part water based, fire rated sealant which has been design to provide smoke and fire protection on construction joints & service penetrations in both vertical and horizontal applications.
- Tested in accordance with ASTM E 814 (UL 1479), ASTM E 1966 (UL 2079), ASTM E 2307, ASTM E 84 (UL 723) the fischer RFS can provide up to 3 hours fire rating.
- Meeting the new requirements of ASTM E 1399, the fischer RFS has been cycled tested up to 500 times.
- fischer RFS 640 is Asbestos, Solvent and hazardous ingredients free, it exhibits excellent slump characteristics, is easy to apply and cures to a flexible elastomeric seal. It is suitable for internal applications and for conditions where dynamic movement may occur.
- RFS 640 has also been tested at positive pressure with a minimum 0.01 in. (2.5 mPa) water i.a.w UL 2079 test standards.

INSTALLATION

Note: Firestop material must be installed in accordance with detailed instruction or the approved system:

- 1 Clean all contact surfaces so they are free from loose debris and contaminants
 - 2 Install the required backing material as per the detailed instructions or approved system:-
Note: Backing material MUST be installed under compression - there should be no loose backing material, voids or gaps present
 - 3 For best application results - fischer RFS 640 should be applied at room temperature
 - 4 Apply fischer RFS 640 to the required parameters as per detailed instruction or approved system making sure that it is in contact with all surfaces to provide maximum adhesion - fischer RFS 640 can be installed by using recommended spray equipment or brush applied. Contact your local fischer representative for more details.
Note: Overspray a minimum of 12.5mm (or as recommended) beyond all surrounding surfaces
 - 5 Tool sealant to a defect free finish using a wetted trowel or putty knife
 - 6 Clean all equipment with water immediately after use
- * Spray equipment should be clean in accordance with manufacture instructions.



SPECIFICATIONS

Description	Order No.	Size [ml]	Qty. Per Box	Suitable for use with
RFS 640	516539	19 lt	1	-

TECHNICAL DATA

Chemical Base:	Water-Based
Density:	approx 1.25 g/cm ³
Application temperature:	+5°C to +40°C
Skin-forming time at 25°C:	approx 30-45 min*
Curing time at 25°C:	approx. 5-7 days*
Storage temperature:	+2°C to +49°C
Movement capability:	upto 50%**
Water resistant:	yes***
Shelf-life:	36 months (under recommended conditions)
pH Value:	7 to 8
Sound transmission class: (dB) Tested in a UL 411 wall assembly to ASTM E90	50
Surface burning characteristics: ASTM E 84 UL 723 Tunnel Test	Flame spread - 5 Smoke index - 5
Colour	Red

* dependant on substrate, air humidity and weather conditions

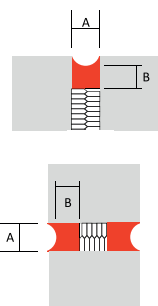
** depending on UL listed system and configuration

*** water resistant in accordance with UL 2079

APPLICATION DATA

The following dimensions must be observed when using fischer RFS 640

Consumption Guide



Joint Width [inch]	Joint Width [mm]	Ft/Gallon	Ft/Pail	LM/Gallon	LM/Pail
0.25	6	198	1325	89	404
0.50	13	164	1099	74	335
0.75	19	141	941	63	287
1.00	25	124	830	56	253
1.25	32	109	731	49	223
2.00	51	82	548	37	167
4.00	102	49	328	22	100
6.00	152	35	233	16	71
8.00	203	27	180	12	55

Above provides approx. yield for a coverage of 1/16" (1.5mm WFT) with a 1/2" (12.5mm) overlap

ADDITIONAL INFORMATION

Note: Please refer to MSDS for further information

Recommendations

- Can be used in conjunction with a suitable backing material as approved in detailed instruction or approved system
 - Non-flammable mineral wool (min. 60 kg/m³)

Storage

- Storage temperatures between +2°C and +49°C
- Do not dilute or mix with any other chemical
- Store away from heat sources
- Keep container closed until use
- Monitor expiry date on pail