

Fast and efficient solution for forming service penetrations through concrete floors



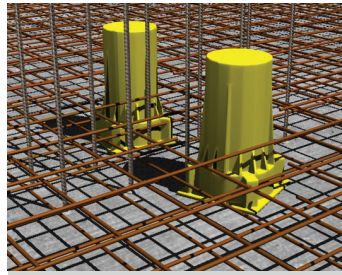
FCID



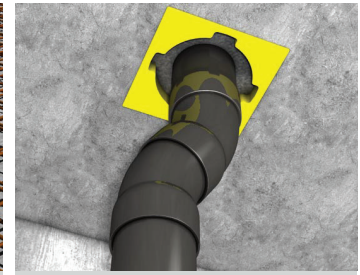
FCID - E



MRF



Concrete slab application



Extension of FCID

APPLICATIONS

- Sealing & firestopping PVC & HDPE pipes up to 160mm (6")
- Forms holes up to 200mm (10") thick concrete floors
- FCID and MRF creates recesses in slabs for lower positioning of Soil Manifold units in wet room applications

ADVANTAGES

- Quick Installation.
- Watertight seal
- Higher Tolerance
- Easily extendable
- Wider base for further connections
- No further collars or wraps required.
- Reduce working at heights
- Cost Saver

APPROVALS

British Standard

BS 476 - 20

Australian Standard

AS 1530: Part 4

BUILDING MATERIALS

Suitable for:

- Reinforced cast concrete slabs
- Some prefabricated slab systems. (Subject to design)

DESCRIPTION

- Fischer FCID Cast In Device is a pass through system which is constructed from a highly resilient polypropylene material and contains a powerful Intumescent graphite band which has been designed for non-metallic pipe applications in reinforced cast concrete slabs and some prefabricated slab systems. (Subject to design)
- Tested to AS 1530: Part 4 and BS 476 Part 20, the FCID can provide up to 4 hours fire resistance.
- The 250mm high FCID has been dimensionally designed to meet most common applications. With a reduced foot plate for closer proximity positioning, an increase neck for higher tolerances and an enlarged base opening allowing for elbow or socket fittings to be positioned within the device, the FCID can be easily modified to suit a variety of concrete depths utilizing the accessories such as the Eco friendly Fibrous Extension tube FCID E and also integrate with the MRF Recess Former for applications requiring formed recesses..
- The FCID is rugged enough to withstand the force and load of a concrete pour, yet lightweight enough to permit easy placement and handling.

INSTALLATION

Note: Firestop material must be installed in accordance with detailed instruction or the approved system.

1. Position FCID as required and attach to formwork.

For Concrete Slab thickness greater than 250mm

- Remove end cap from FCID.
- Using FCID extension sleeve FCID - E, mark and cut using a fine tooth saw to required length.
- Slide extension sleeve over FCID unit until it contacts side ribs.
- Apply Extension Cap FCID - E/C to top of the extension sleeve.
- Position FCID and extension assembly as required and attach to formwork.

For Concrete Slab thickness less than 250mm

- Cut FCID to required depth of concrete slabs.
- Place cover cap FCID - CP on top of FCID.
- Position FCID as required and attach to formwork.

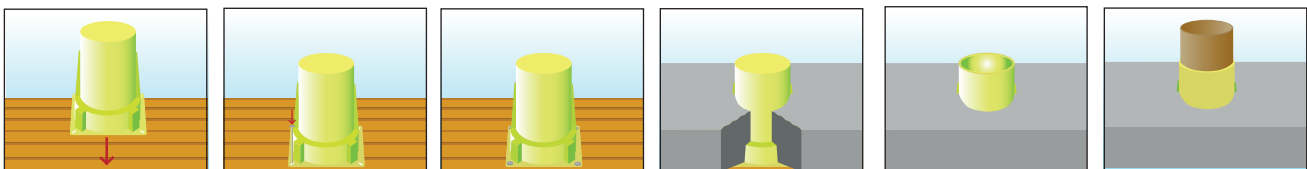
2. Pour concrete to required depth.

3. On completion of concrete curing, remove all formwork and shuttering as necessary.

4. Remove cap from top of FCID.

5. Place pipe through FCID as required.

Note: If the pipe is passed from top to bottom, the rubber seal inside FCID will be forced down, lift the pipe up to ensure correct.





Cast-in Device FCID



Manifold Recess Former FCID-MRF



Extension Sleeve FCID - E



Extension Cap FCID-E/C

SPECIFICATIONS

Description	Order No.	Fits Pipe Dia.	Height x Shell Dia.	Qty. Per Box
FCID 65	509532	Nom 3"/75mm Pipe	95mm OD x 250mm High - Base = 154mm x 154mm	1
FCID 100	506324	Nom 4"/110mm Pipe	140mm OD x 250mm High - Base = 198mm x 198mm	1
FCID 150	509533	Nom 6"/160mm Pipe	194mm OD x 250mm High - Base = 253mm x 253mm	1
FCID 65-E/1000	509791	FCID 65 CI Device	95mm ID x 101mm OD x 1000mm long	1
FCID 100-E/1000	509792	FCID 100 CI Device	140mm ID x 147mm OD x 1000mm long	1
FCID 150-E/1000	509793	FCID 150 CI Device	194mm ID x 201mm OD x 1000mm long	1
FCID 65-E/C	511450	FCID 65-E/1000	93.5mm - 96.5mm Tapered OD x 19mm High	1
FCID 100-E/C	509794	FCID 100-E/1000	139mm - 142.5mm Tapered OD x 25.4mm High	1
FCID 150-E/C	511451	FCID 150-E/1000	194.5mm - 199mm Tapered OD x 25.4mm High	1
FCID-MRF	517846	FCID 100 CI Device	250mm - 220mm x 250mm - 220mm x 60mm Tapered Recess	1
FCID 65-CP Cap Plug	510878	FCID 65 CI Device	88mm - 91.5mm Tapered OD x 19.5mm High	1
FCID 100-CP Cap Plug	510879	FCID 100 CI Device	131.5mm - 136mm Tapered OD x 25.4mm High	1
FCID 150-CP Cap Plug	510880	FCID 150 CI Device	186mm - 194mm Tapered OD x 25.4mm High	1

TECHNICAL DATA

State:	Solid
Colour:	Fluorescent Yellow
Odour:	Odourless
Shell Material:	Polyethylene
Fire Rating:	4 hours - BS 476: Part 20 & AS 1530: Part 4
Suitable for pipe dia:	max upto 150mm
Standard Height:	250mm
Extension or reduction in height possible:	Yes
Standard flange width:	min. 154mm and max 254mm
Significant expansion occur at temperature:	> 160°C
Storage temperature:	n/a
Shelf-life:	n/a

ADDITIONAL INFORMATION

Note: Please refer to MSDS for further information

Recommendations

1. Can be used in conjunction with FCID - E and FCID - E/C for deeper concrete depths

Storage

1. Store indoors
2. Store away from heat sources and direct sunlight